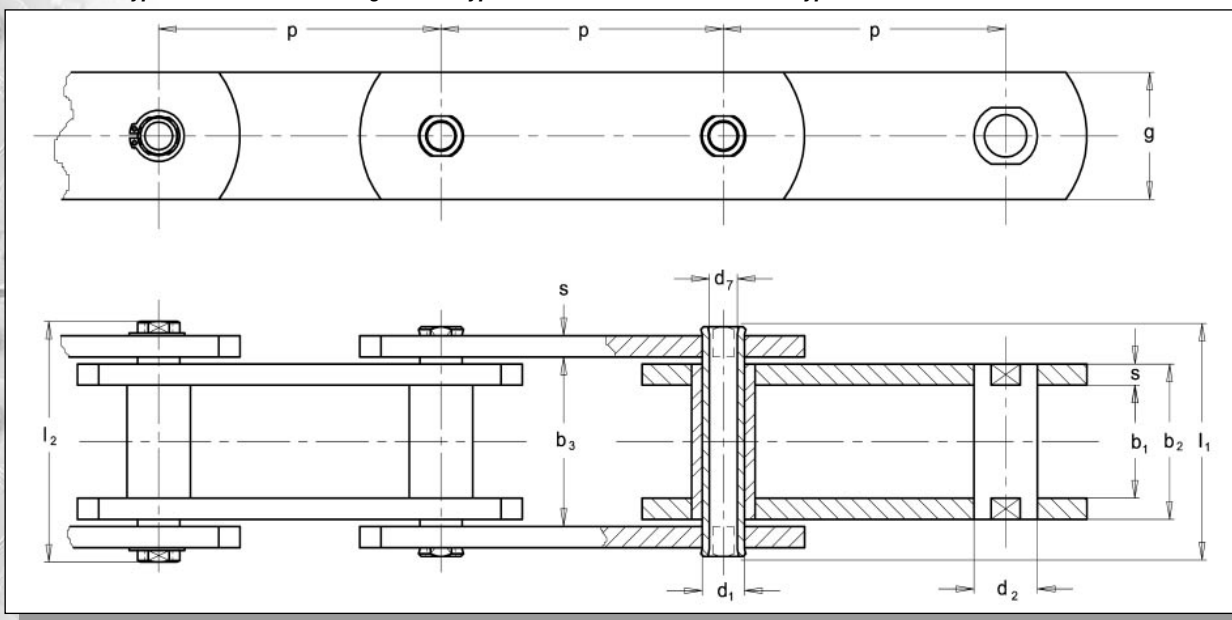
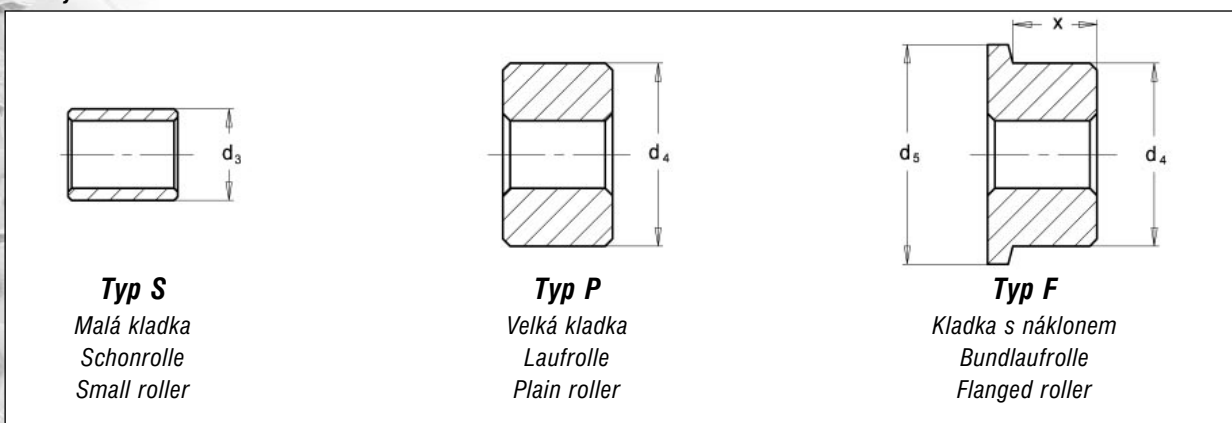


Zobrazeno: typ B - bez kladek • Dargestellt: Typ B - ohne Rollen • Illustrated: type B - without rollers



Kladky - DIN 8169 • Rollen - DIN 8169 • Rollers - DIN 8169



ISO Nr. ISO Nr. ISO St.	p mm						b ₁ mm min	b ₂ mm max	b ₃ mm min	d ₁ mm max	d ₂ mm B	d ₃ mm S	d ₄ mm P	d ₅ mm F	d ₇ mm	x mm	l ₁ mm max	l ₂ mm max	g mm	s mm	f mm ²	F _B kN min	
*MC 28	50	63	80	100	125	160	200	20	28	28,3	13,0	17,5	25,0	36	42	8,2	14,0	42	47	25	3,5	364	28
MC 56	63	80	100	125	160	200	250	24	33	33,3	15,5	21,0	30,0	50	60	10,2	17,5	48	54	35	4,0	511	56
MC 112	80	100	125	160	200	250	315	32	45	45,5	22,0	29,0	42,0	70	85	14,3	23,0	67	73	50	6,0	990	112
MC 224	125	160	200	250	315	400	500	43	60	60,6	31,0	41,0	60,0	100	120	20,3	31,0	96	96	70	8,0	1860	224

* = čepy nejsou ploškovány

f = Plocha kloubu

F_B = Pevnost při přetžení

* = Bolzen ohne Verdrehungsschutz

f = Gelenkfläche

F_B = Bruchkraft

* = Pins not flatted

f = Bearing area

F_B = Breaking load

