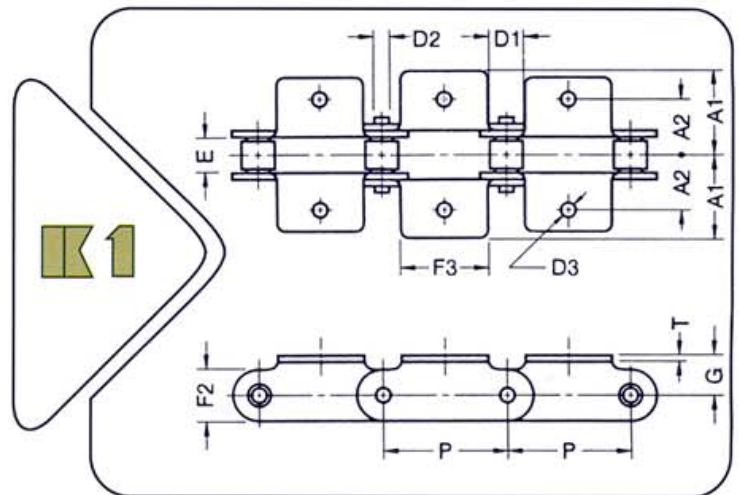
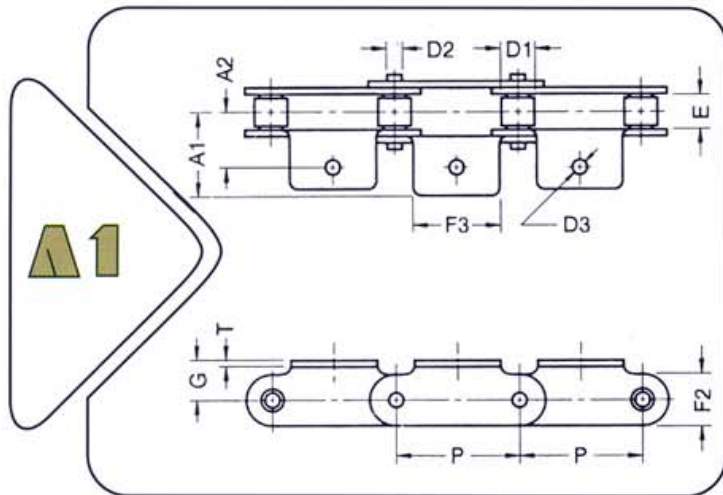


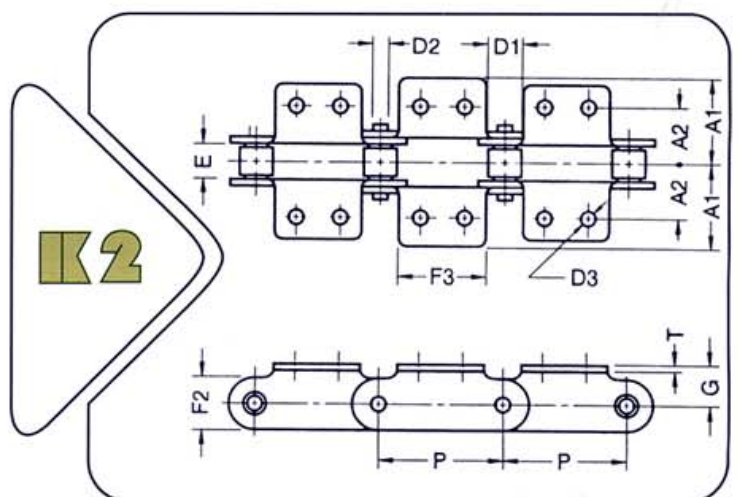
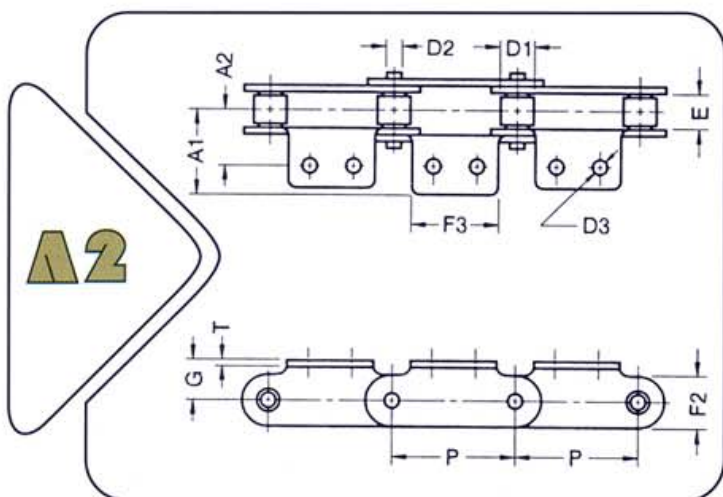


DOUBLE-PITCH CHAIN ATTACHMENT

Transmisión s.a.



ANSI Chain No.	Pitch x Width		Roller D1	Pin D2	Links		Attachment					Avg. Ult. Tensile Strength kgf
	P	E			T	F2	A1	A2	F3	D3	G	
	inch	mm	mm	mm	mm	mm	mm	mm	mm	mm	mm	
C2040	1 x 5/16	25.4 x 7.92	7.92	3.98	1.49	12.06	18.85	12.70	19.05	3.57	9.12	1800
C2050	1 1/4 x 3/8	31.75 x 9.52	10.16	5.09	2.01	15.08	24.00	15.88	25.40	5.16	11.13	3000

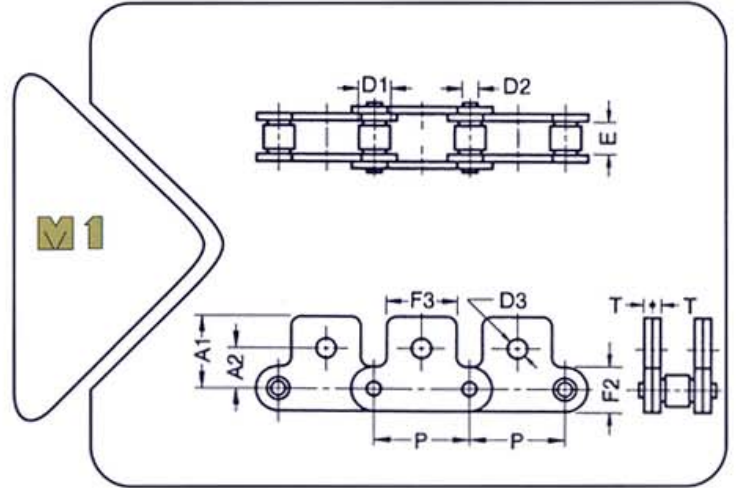
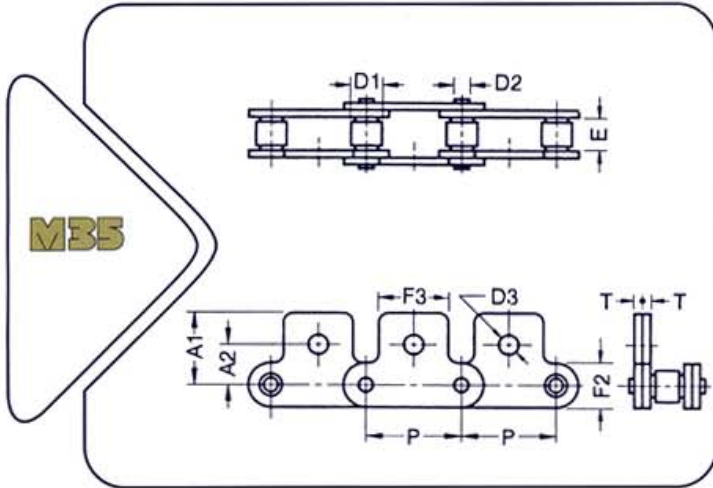


ANSI Chain No.	Pitch x Width		Roller D1	Pin D2	Links		Attachment						Avg. Ult. Tensile Strength kgf
	P	E			T	F2	A1	A2	F3	D3	G	M	
	inch	mm	mm	mm	mm	mm	mm	mm	mm	mm	mm	mm	
C2040	1 x 5/16	25.4 x 7.92	7.92	3.98	1.49	12.06	18.85	12.70	19.05	3.57	9.12	9.52	1800
C2050	1 1/4 x 3/8	31.75 x 9.52	10.16	5.09	2.01	15.08	24.00	15.88	25.40	5.16	11.13	11.91	3000

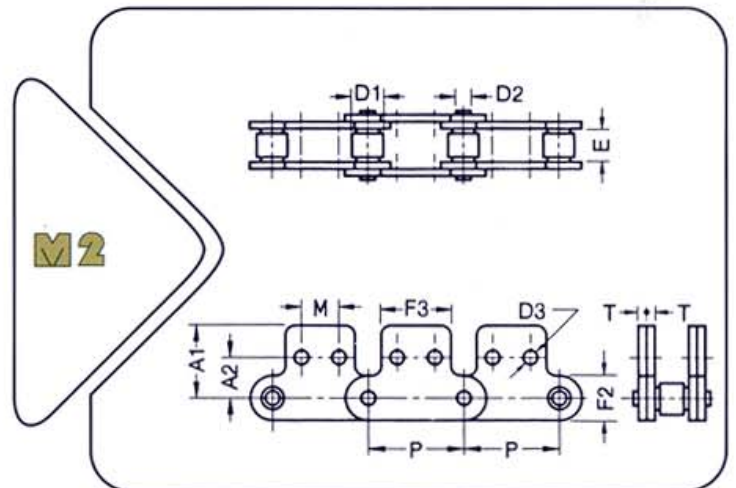
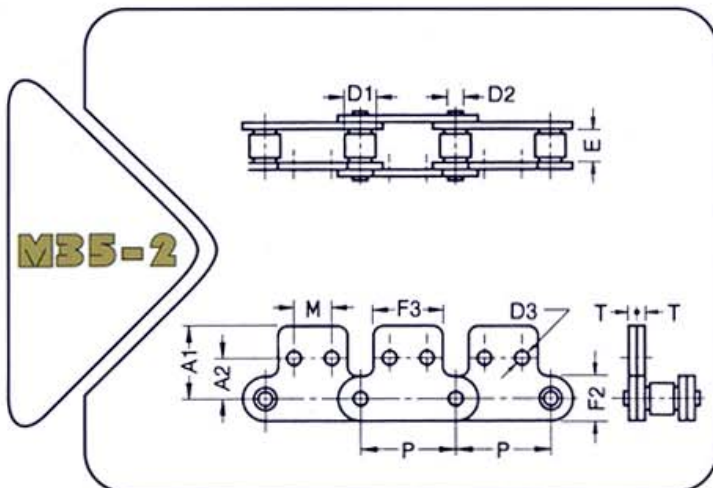


DOUBLE-PITCH CHAIN ATTACHMENT

Transmisión s.a.



ANSI Chain No.	Pitch x Width		Roller D1	Pin D2	Links		Attachment				Avg. Ulti. Tensile Strength kgf
	P	E			T	F2	A1	A2	F3	D3	
	inch	mm	mm	mm	mm	mm	mm	mm	mm	mm	
C2040	1 x 5/16	25.4 x 7.92	7.92	3.98	1.49	12.06	19.28	11.12	19.05	5.16	1800
C2050	1 1/4 x 3/8	31.75 x 9.52	10.16	5.09	2.01	15.08	24.60	14.27	25.40	6.35	3000



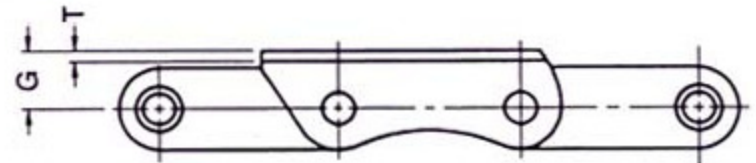
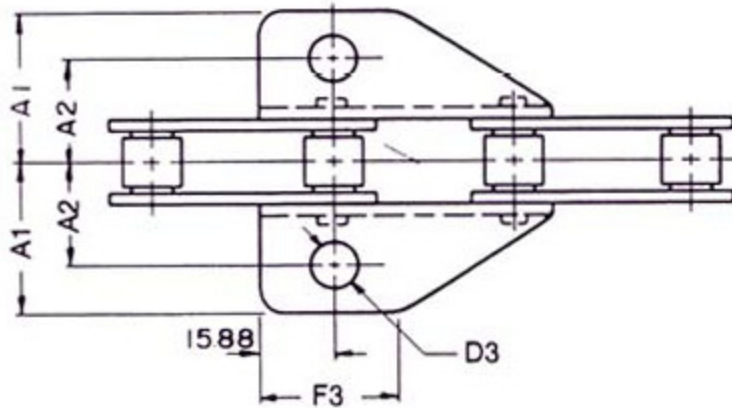
ANSI Chain No.	Pitch x Width		Roller D1	Pin D2	Links		Attachment					Avg. Ulti. Tensile Strength kgf
	P	E			T	F2	A1	A2	F3	D3	M	
	inch	mm	mm	mm	mm	mm	mm	mm	mm	mm	mm	
C2040	1 x 5/16	25.4 x 7.92	7.92	3.98	1.49	12.06	19.28	13.49	19.05	3.57	9.52	1800
C2050	1 1/4 x 3/8	31.75 x 9.52	10.16	5.09	2.01	15.08	24.60	15.88	25.40	5.16	11.91	3000



C2060 CHAIN ATTACHMENT

Transmisión s.a.

K39M



Dimensions - mm

Attachment	A1	A2	F3	D3	G	T
K39M	31.75	21.42	29.50	9.78	12.70	2.38